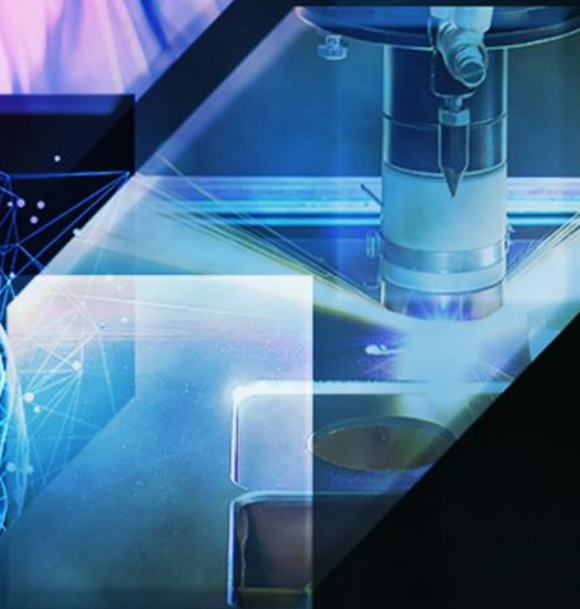


Horizon 2020 R&I funding programme Opportunities & Luxinnovation support



LUXINNOVATION
TRUSTED PARTNER FOR BUSINESS

Vision

Leveraging research made in Luxembourg with European Funding in order to:

- Increase our visibility
- Foster international collaborations
- Demonstrate excellence
- Attract top talent
- Increase industry collaboration

THE FRAMEWORK PROGRAMME FOR RESEARCH AND INNOVATION

HORIZON 2020



- The main research funding instrument of the European Commission
- Mix of thematic calls in certain priority areas (e.g. health, environment, industry...) and bottom-up programmes for all career stages
- Multi-actor approach: Academia, companies, policy makers, patient organizations, end-users... all work together in consortia to address the research goal

AIM: support fundamental research AND bring solutions to end-users (consumers, policy makers, patients...)

- 1 Increase participation in European Research programmes such as Horizon 2020
- 2 Increase success rates for Luxembourgish participants in Horizon 2020
- 3 Facilitate collaboration between Luxembourg public research and companies

1

Personalized support measures

- Identifying opportunities for your needs
- Training in grant writing
- Help with consortium building
- Help with proposal writing
- Legal and financial questions

2

Representing your interests in the design of future calls and topics

=> provide your feedback to improve future topic coverage

Why participate?

Career development

EU-funded projects are an international label of excellence and certify your management skills

Networking

Working in consortia leads to sustainable collaborations and increases technology transfer

Visibility

You become an ambassador for excellent research made in Luxembourg in multilateral projects

Funding

Projects provide additional funding and allow contributing to projects beyond national funding means

Who should participate?

Horizon 2020 covers the entire innovation value chain



What can you contribute?

=> Discuss with your National Contact Point

Public research:
Academia
RTOs

Private research:
Companies
Start-ups
Spin-offs

Agrifood system:
Administrations
Laboratories
Regulators

NGOs:
Stakeholder Support
Farmer representation

End users:
Consumers
Citizens
Policy makers

Transversal: Social sciences, economics, ICT (data, security, analytics)

Types of contribution in consortia

Different levels of work load depending on your interest

■ Coordination

- Recommended for experienced public research organizations
- In charge of coordination between partners and (often) the bulk of proposal writing

■ Leading a work package

- e.g. data management, clinical trial, communication, health economics, life cycle analysis

■ Standard contributions

- Contributing data sets, patient representation, biological assays

■ End users

- Piloting solutions (e.g. Companies, care associations, hospitals, policy makers, administrations)

National Contact Points (NCPs)

Offering personalized support to increase your success

- Finding the best matching opportunities for you
- Organizing workshops based on your needs
 - Thematic, European networks, grant writing, consortium building, project management
- Finding consortia and partners
- Connecting you to European partnerships, associations, initiatives
- Connecting you to companies based in Luxembourg
- Proposal reviewing
 - Thematic experts help you shape your proposal and to get the right keywords in the right place
 - Putting your proposal in the EU policy context
- Financial support for Horizon 2020 participation (for companies only)

Demystifying European Funding

■ Low success rates

- LU participants have among highest success rates (health > 20%)

■ Complicated procedures

- NCPs help you in the process

■ Administrative burden

- Reporting similar than national programmes

■ Difficult to find partners

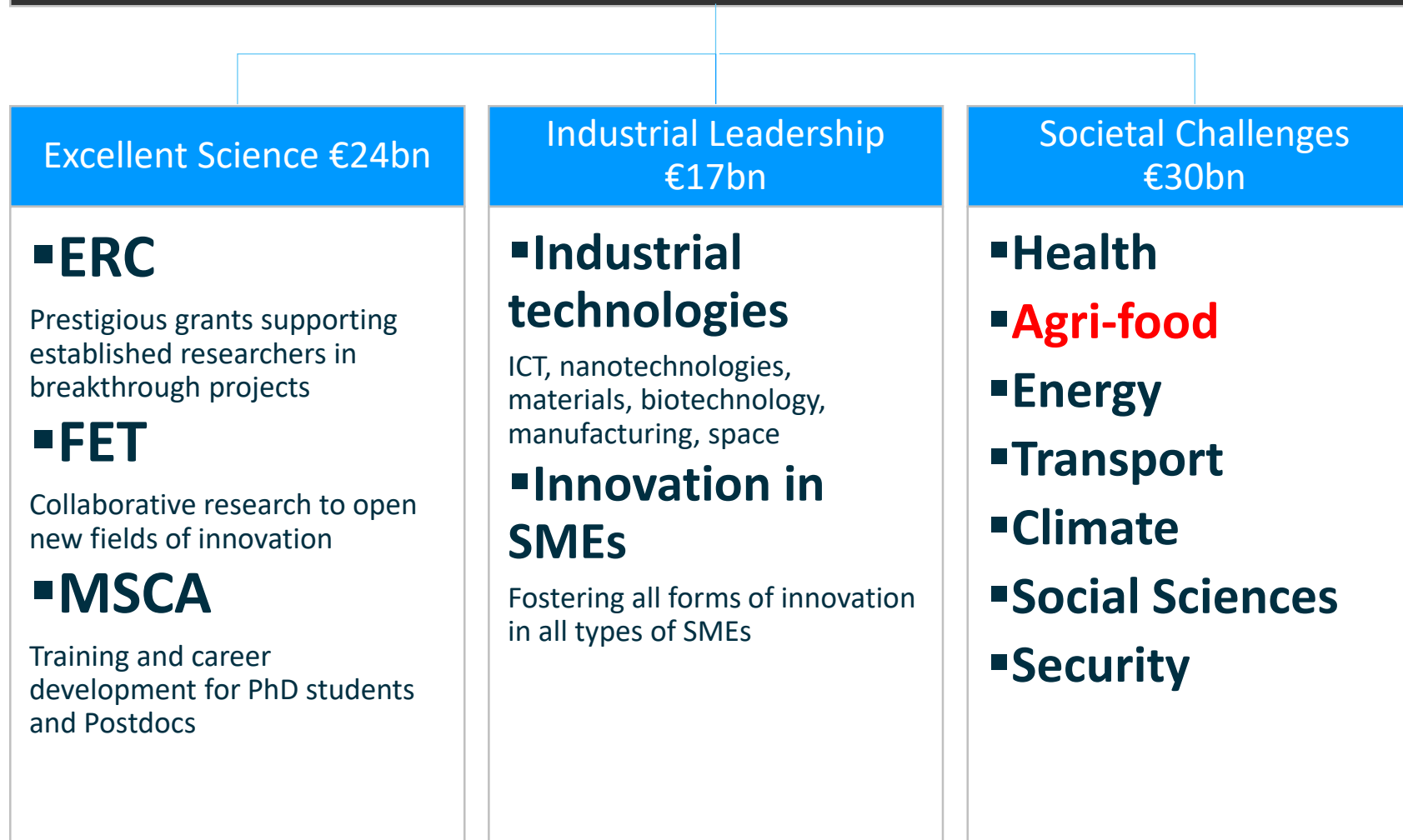
- NCPs help you identify potential consortia

How to participate?

- Meet with your National Contact Point (NCP)
- Discuss your interests, needs, challenges
- We will propose the most suitable funding opportunities
- We will support you throughout the writing process

Horizon 2020 structure

Covers the value chain from fundamental research to market introduction



SC5: Climate action, environment, resource efficiency and raw materials

Overview of the workprogramme 2018-2020



Climate Action



Circular Economy



Raw Materials



Water



Innovating cities for sustainability & resilience



Protecting natural & cultural assets



Examples of opportunities in SC5

DL: 13 FEB & 3 SEP 2020

SC5-27-2020 (RIA): Strengthening international collaboration: enhanced natural treatment solutions for water security and ecological quality in cities
5MEUR (10MEUR)

SC5-32-2020 (RIA): Addressing wild pollinators decline and its effects on biodiversity and ecosystem services
5MEUR (5MEUR)

SC5-33-2020 (CSA): Monitoring ecosystems through research, innovation and technology
3MEUR (3MEUR)

LC-CLA-14-2020 (RIA): Understanding climate-water-energy-food-nexus and streamlining water-related policies
4-5MEUR (13MEUR)

CE-SC5-30-2020 (RIA): Plastics in the environment: understanding the sources, transport, distribution and impacts of plastics pollution
5MEUR (5MEUR)

Societal Challenge 2:

Food

Soil

Bioeconomy

Top-down calls for consortia-based projects

SC2 – General themes

- Sustainable food security
- Healthy food
- Environment and climate-smart food
- Blue growth
- Rural renaissance
- Modernizing policies
- Food and Natural Resources

Thank you!

■ **Charles Betz & Sanna Alaranta**

European RDI Support

LUXINNOVATION GIE

5, avenue des Hauts-Fourneaux
L-4362 Esch-sur-Alzette

T (+352) 43 62 63 - [895]

M (+352) 621 986 [668]

charles.betz@luxinnovation.lu

sanna.alaranta@luxinnovation.lu



www.luxinnovation.lu



Luxinnovation



@Luxinnovation
@LuxTradeInvest



@Luxinnovation
@LuxTradeInvest