

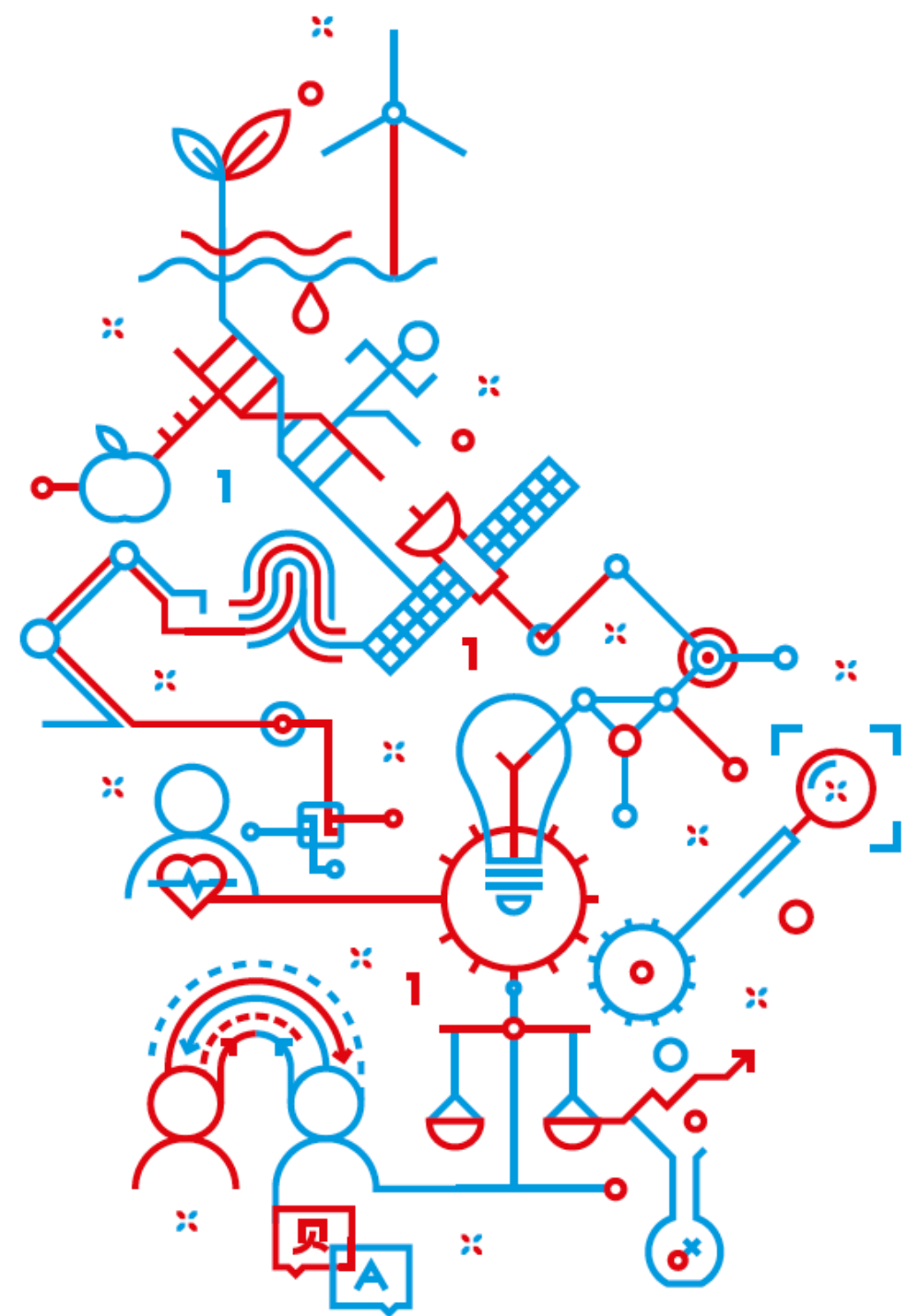
# Horizon Europe

## Funding Food Safety Research

Charles Betz, PhD

National Contact Point

Luxinnovation



# About us

# Luxinnovation

a public-private partnership



**MINISTRY  
OF THE  
ECONOMY**



**MINISTRY  
OF HIGHER  
EDUCATION  
AND RESEARCH**



**CHAMBER  
OF  
COMMERCE**



**CHAMBER  
OF SKILLED  
CRAFTS**



**FEDIL**

# Rébecca Damotte

*Advisor – EU R&D and  
innovation support*





# Charles Betz

*Advisor – European R&D  
and Innovation Support*



# Our mission and services



# Vision

Leveraging research made in Luxembourg with European Funding in order to:

- Increase our visibility
- Foster international collaborations
- Demonstrate excellence
- Attract top talent
- Increase industry collaboration



- 1 Increase participation in European Research programmes such as Horizon 2020
- 2 Increase success rates for Luxembourgish participants in Horizon 2020
- 3 Facilitate collaboration between Luxembourg public research and companies



1

## Personalized support measures

- Identifying opportunities for your needs
- Training in grant writing
- Help with consortium building
- Help with proposal writing
- Legal and financial questions

2

## Representing your interests in the design of future calls and topics

=> provide your feedback to improve future topic coverage

# Our measures and services





# Informing about opportunities

## Info Days and thematic events



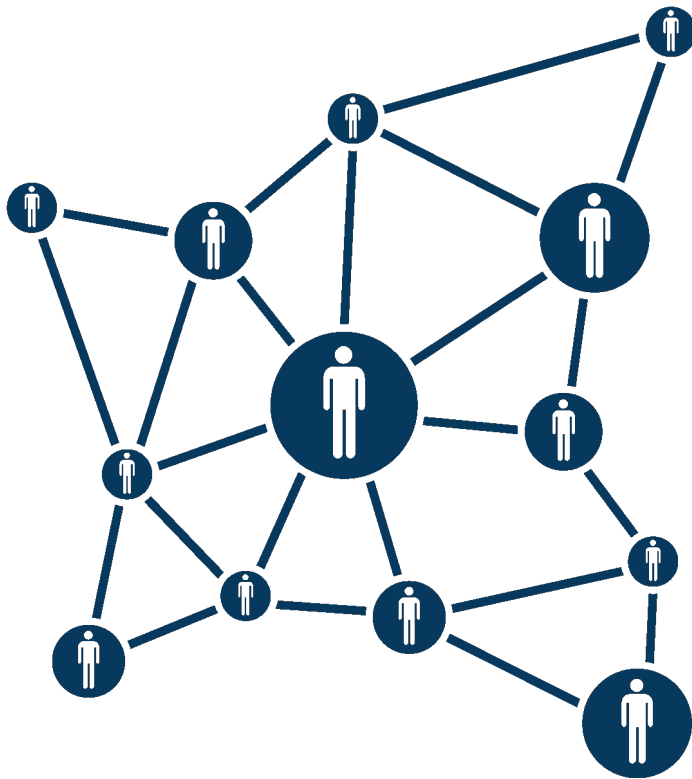
# Matching strenghts with current calls

- Tailored analysis of the RDI agenda of a stakeholder
- As part of the full support players receive from Luxinnovation
- Identification of open calls, future opportunities, past activities





# Identifying best consortia and partners



- Analysis of top performers from EU databases
- Scanning and prioritising of European Partnerships
- Direct contacts with coordinators and experts in Europe

# Critical review of proposals

- Down to the technical level thanks to our background and to the knowledge of the process towards the publication of the call
- Advising on best practices on project management, and legal and financial issues



# EU funding overview

# EU R&I framework programme

Shaping Europe's future with investment in R&I

## Horizon 2020 programme



**€80bn**  
R&I funding  
programme



Investing in science & innovation  
to stimulate economic growth  
and create jobs

**2020**

## Horizon Europe programme



**€100bn**  
R&I funding  
programme  
**2021**



Tackling Climate Change,  
achieving SDGs, boosting EU's  
competitiveness and growth

**2027**

## Green Deal Call



**€1bn**  
cross-cutting  
call



focusing  
on GD  
objectives





## Pillar 1

Excellent Science

European Research Council

Marie Skłodowska-Curie  
Actions

Research Infrastructures



## Pillar 2

Global Challenges and  
European Industrial  
Competitiveness



Joint Research Centre



## Pillar 3

Innovative Europe

European Innovation Council

European innovation  
ecosystems

European Institute of  
Innovation  
and Technology

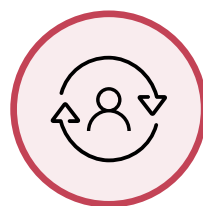
## Widening Participation and Strengthening the European Research Area

Widening participation and spreading excellence

Reforming and Enhancing the European R&I system

# Who should participate?

Horizon 2020 covers the entire innovation value chain



**What can you contribute?**

**=> Discuss with your National Contact Point**

**Public research:**  
Academia  
RTOs

**Private research:**  
Companies  
Start-ups  
Spin-offs

**Agrifood system:**  
Administrations  
Laboratories  
Regulators

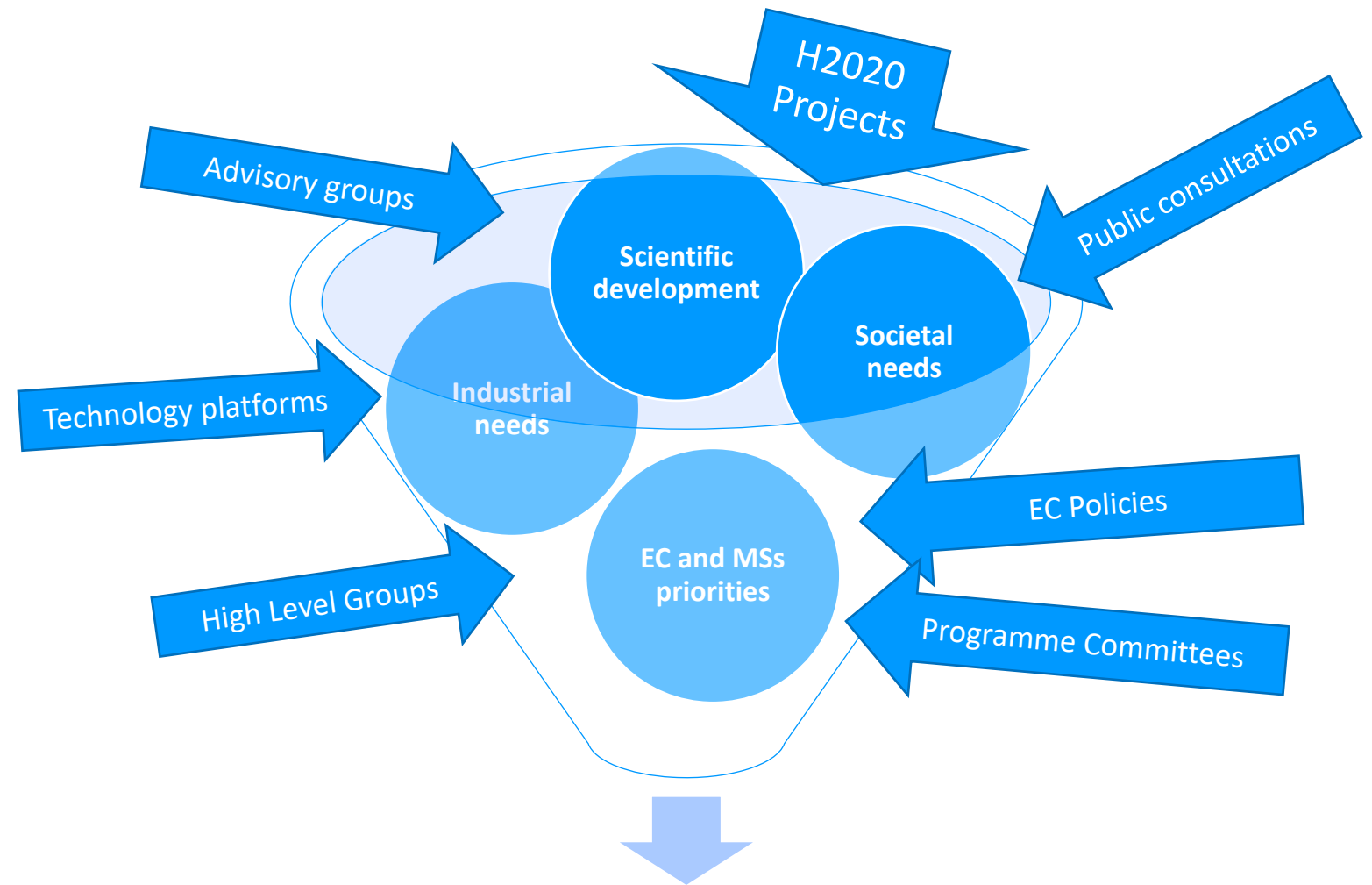
**NGOs:**  
Stakeholder Support  
Farmer representation

**End users:**  
Consumers  
Citizens  
Policy makers

**Transversal: Social sciences, economics, ICT (data, security, analytics)**

# Our additional role: Programme Committee Delegates

Bringing  
Luxembourg  
interests into the  
Work Programmes



**Framework Programme**

# Horizon 2020 Green Deal call



# The European Green Deal

## New Growth Strategy for Europe



# Horizon 2020 Green Deal Call

## Examples of currently open calls Farm to Fork

- LC-GD-6-1-2020: Testing and demonstrating systemic innovations in support of the Farm-to-Fork Strategy
  - Deadline 26.01.2021
  - 6-12Mio €
  - Eg Subtopic B. [2021] Achieving climate neutral food businesses by mitigating climate change, reducing energy use and increasing energy efficiency in processing, distribution, conservation and preparation of food (IA)
  - Subtopic E. [2021] Reducing food losses and waste at every stage of the food chain including consumption, while also avoiding unsustainable packaging (IA)



# Horizon Europe Cluster 6

Food, agriculture,  
environment, natural  
resources

Top-down calls for consortia-based projects

# Horizon Europe Other schemes



# MSCA

Bottom-up funding for  
postdoctoral researchers  
for public and private

# Partnerships

Thematic partnerships that launch internal calls

# Partnerships

## Food-related Partnerships under Horizon Europe

- European Partnership accelerating farming systems transition: **agroecology** **living labs** and research infrastructures
- Agriculture of **data**
- European Partnership for **Safe and Sustainable Food Systems**
- European Partnership **Water Security** for the Planet (Water4All)



# Missions

European research and innovation missions aim to deliver solutions to some of the greatest challenges facing our world

# Mission on soil health and food

Caring for soil is caring for life



**Ensure 75% of soils are healthy by 2030 for food, people, nature and climate**

**In 2021: Call for building capacities for engagement, outreach and knowledge on soil health**

**More information:**

**[https://ec.europa.eu/info/publications/caring-soil-caring-life\\_en](https://ec.europa.eu/info/publications/caring-soil-caring-life_en)**

# Basic key steps to success

**Develop your idea and prepare a value proposition**

**Get advice and support**

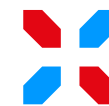
**Form a consortium**

**Get inspired by past & ongoing projects**





THANK YOU!



**LUXINNOVATION**  
TRUSTED PARTNER FOR BUSINESS

Making  
Innovation  
Happen

# Thank you!

■ **Charles Betz**  
*EU Funding Advisor*

**LUXINNOVATION GIE**  
5, avenue des Hauts-Fourneaux  
L-4362 Esch-sur-Alzette  
T (+352) 43 62 63 - 895  
M (+352) 621 986 668  
charles.betz@luxinnovation.lu



[www.luxinnovation.lu](http://www.luxinnovation.lu)



[www.linkedin.com/  
company/luxinnovation-gie](http://www.linkedin.com/company/luxinnovation-gie)



[www.facebook.com/Luxinnovation.  
Making.Innovation.Happen](http://www.facebook.com/Luxinnovation.Making.Innovation.Happen)



[www.twitter.com/Luxinnovation](http://www.twitter.com/Luxinnovation)